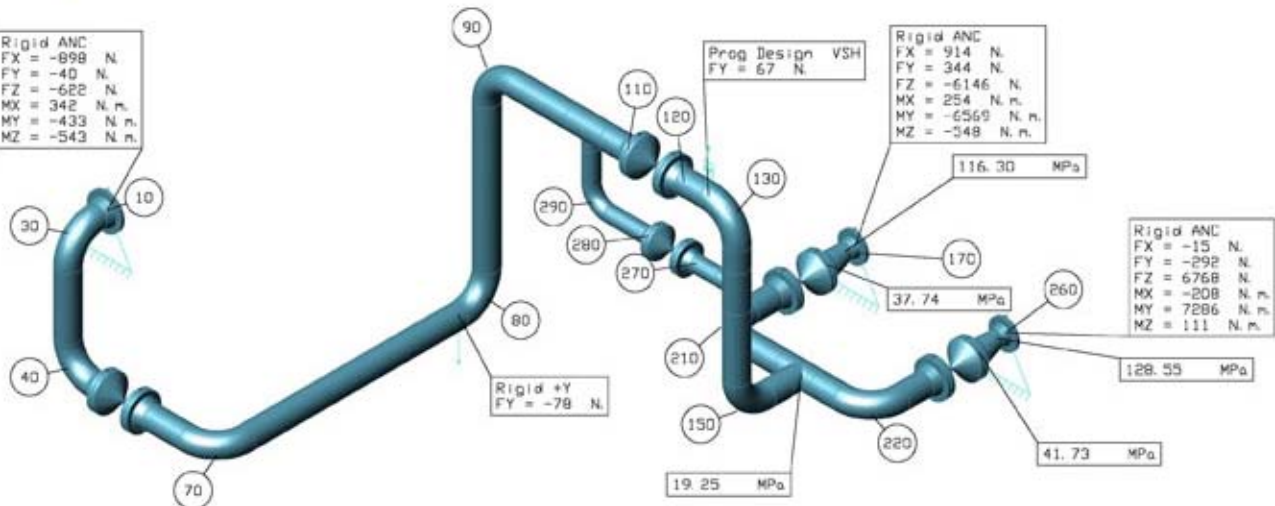


Rigid ANC
 FX = -898 N
 FY = -40 N
 FZ = -622 N
 MX = 342 N.m
 MY = -433 N.m
 MZ = -543 N.m



Prog Design VSH
 FY = 67 N

Rigid ANC
 FX = 914 N
 FY = 344 N
 FZ = -6146 N
 MX = 254 N.m
 MY = -6569 N.m
 MZ = -348 N.m

Rigid ANC
 FX = -15 N
 FY = -292 N
 FZ = 6768 N
 MX = -208 N.m
 MY = 7206 N.m
 MZ = 111 N.m

Rigid +Y
 FY = -78 N

MATERIAL	TAG	CODE ENGINEERING SOFTWARE				ENG. RECORD	DATE			
SPEC.	DWG REF.					DRAWN BY				
SCH.	LINE SIZE				CHECKED			LINE NO.		
RATING	WELD PROC.				APPROVED			JOB NO.		
TEMP.	INSULATION				APPROVED			DRAWING NO.		
PRESS.	REMARKS	NONE	NO.	REVISION	DATE	BY	APR	SCALE	AS NOTED	REV. 0