

Home Edit

Open Save Views and Animations Create

File

Back Left SW Iso Top Right NE Iso Bottom SE Iso NW Iso

Standard Views

Walk

Orbit Turntable Orbit Pan

3D Section Tool Zoom

Zoom to Window Zoom Extents Zoom Selection

Operators

Select Group Select Measure

Undo Redo

Shaded Wireframe

Render Modes

Skip to Beginning Previous Frame Play

Next Frame Skip to End Record

Animation

Save Camera Position Views

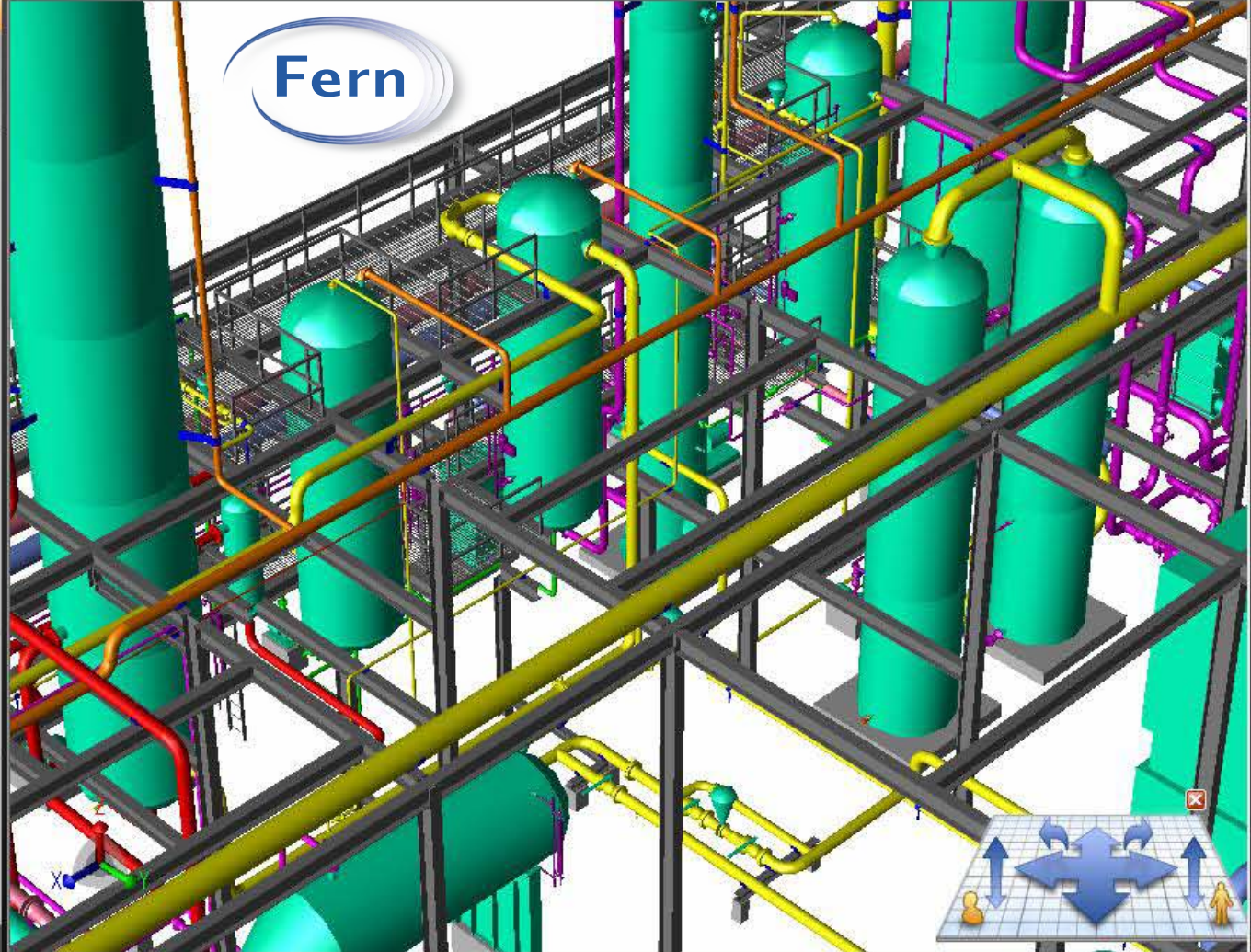
Line Number View

Reset All

<type here to search>

% Tr...	Line Number
+ 100%	2"-ASF-715-A9-N
+ 100%	2"-ASF-742-A9-N
+ 100%	8"-ASF-706-A9-N
+ 100%	8"-ASF-731-A9-N
+ 100%	10"-ASF-700-A9-N
+ 100%	6"-ASF-714-A9-N
+ 100%	6"-ASF-713-A9-N
+ 100%	6"-ASF-711-A9-N
+ 100%	6"-ASF-712-A9-N
+ 100%	8"-ASF-708-A9-N
+ 100%	1 1/2"-ASF-716-A9-N
+ 100%	8"-ASF-738-A9-N
+ 100%	1 1/2"-ASF-746-A9-N
+ 100%	6"-ASF-735-A9-N
+ 100%	6"-ASF-737-A9-N
+ 100%	6"-ASF-705-A9-N
+ 100%	6"-ASF-703-A9-N
+ 100%	6"-ASF-704-A9-N
+ 100%	1"-ASF-755-A9-N
+ 100%	6"-ASF-736-A9-N
+ 100%	2"-ASF-739-A9-N
+ 100%	3"-ASF-759-A9-N
+ 100%	2"-ASF-743-A9-N
+ 100%	3"-ASF-757-A9-N
+ 100%	3"-ASF-756-A9-N
+ 100%	2"-ASF-744-A9-N
+ 100%	3"-ASF-758-A9-N

Pro... Sav... Line... XRe... Lay...



Plan View

Zoom In Zoom Out

Reset

Elevation View

Zoom In Zoom Out

Reset

NUM